

QI Series Piston Vibrators

Need Help Now?

Call 800-842-7284 or visit
www.ChicagoVibrator.com



Lose the noise.

Keep the force.

**Choose the
QI Series.**

QI Series Pneumatic Piston Vibrators

In the past, users have been forced to decide between powerful force or quiet operation. Impacting models are effective, but loud. Non-impacting models are more polite, but not so forceful. At Houston Vibrator, we thought you should have a third choice - quiet and powerful.

The patented design of QI (Quiet Impact) Series Piston Vibrators provides the powerful linear force needed to solve your toughest bulk material flow problems, but reduces noise by up to 20%. Like an impacting model, the piston actually strikes the bottom of the vibrator body, but with a rubber tip, it makes a lot less noise doing it.

The QI Series includes five models to handle a wide variety of applications. Please see the reverse for comparison of noise and force outputs for the QI Series versus our popular BV Series.

Standard features & benefits

- Oil-resistant rubber tip reduces noise without major force reduction
- CNC Machined bodies & pistons ensure reliable operation
- Force & frequency are adjustable by varying supply air pressure
- Efficient operation - uses less air than rotary vibrators with comparable force
- Low maintenance when installed with proper air-prep components

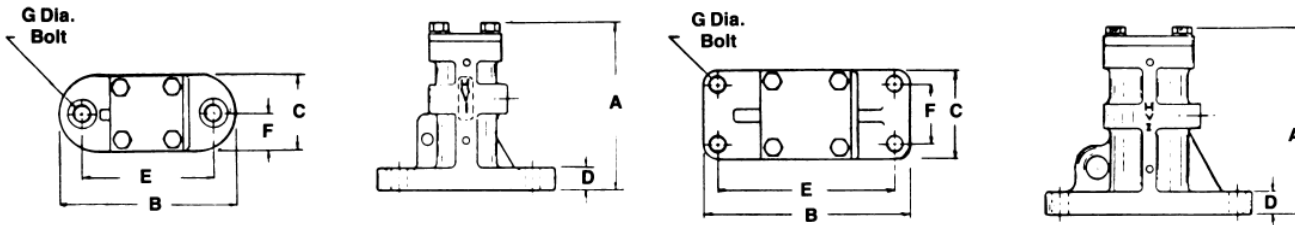
Available Options

- Internal start springs for vertical mounting
- Internal Tefkote for lubrication-free use or high-temp installations
- External coatings for food-grade or corrosive environments
- Tapped exhaust to route exhaust air away from sensitive locations

A few common applications Include:

- Batch plant sand, cement & aggregate bins
- Batch plant weigh hoppers
- End dump trailers
- Hopper-Bottom trailers
- Sugar, flower, and grain bins
- Volumetric Mixer Trucks
- Feed Hoppers
- Dust Collectors & Bag Houses
- Transfer pipes
- PV Truck Loading spouts

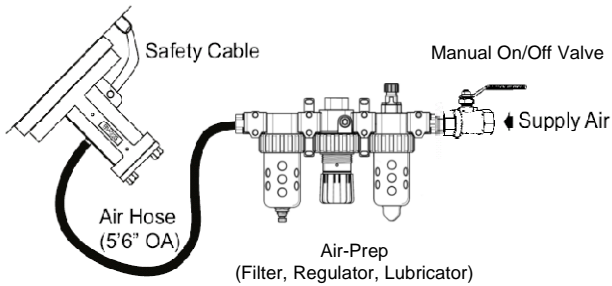
QI Series Technical Data



DIMENSIONAL DATA

Model	A		B		C		D		E		F		G		Weight		Inlet NPT
	in	mm	in	mm	in	mm	in	mm	in	mm	in	mm	in	mm	Lbs	Kgs	
BV-112	3 ¼	83	4 ½	114	2	51	¾	19	3 ½	89	1	25	½	13	4	2	¼
BV-150	5 ½	140	6	152	2 ½	64	¾	19	4 ½	114	1 ¼	32	½	13	9	20	¼
BV-225	7 ¼	184	9	229	3 ½	89	1	25	7 ½	191	1 ¾	44	⅝	16	17	37	¼
BV-225 L	10 ½	267	9	229	3 ½	89	1	25	7 ½	191	1 ¾	44	⅝	16	30	66	¼
BV-350 L	9 ⅝	244	9 ½	241	5	127	1 ½	38	7 ¾	197	3 ¼	83	⅞	22	72	159	⅜

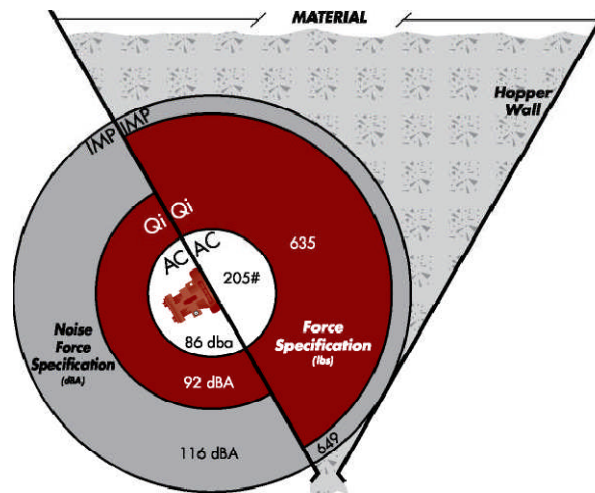
Typical Installation Air-Schematic



Single-unit manual installation for bins and hoppers is shown here for reference purposes.

Additional mounting and control options are available for multiple-unit and automated systems. Consult HV for assistance in configuring your system to suit your application.

Force/Noise Comparison



This illustration compares the force output and noise output of QI, IMP, and AC versions of the BV-225 size piston vibrator. See below for complete specifications.

VIBRATOR SIZE	Quiet Impact			Impacting		Air Cushioned	
	Force Lbs	Noise (dBA)	Noise Reduction	Force Lbs	Noise (dBA)	Force Lbs	Noise (dBA)
BV-112	178	102	10%	189	113	85	86
BV-150	342	96	14%	361	112	112	86
BV-225	635	92	20%	649	116	205	90
BV-225 L	1182	106	7%	942	114	594	100
BV-350 L	1933	100	19%	2863	123	1008	95

Distributed By:

ChicagoVibratorProducts
Flow and Compaction

Division of CVP Group

800-842-7284 (P)

866-247-7538 (F)

Solutions@ChiVib.com

www.ChicagoVibrator.com

